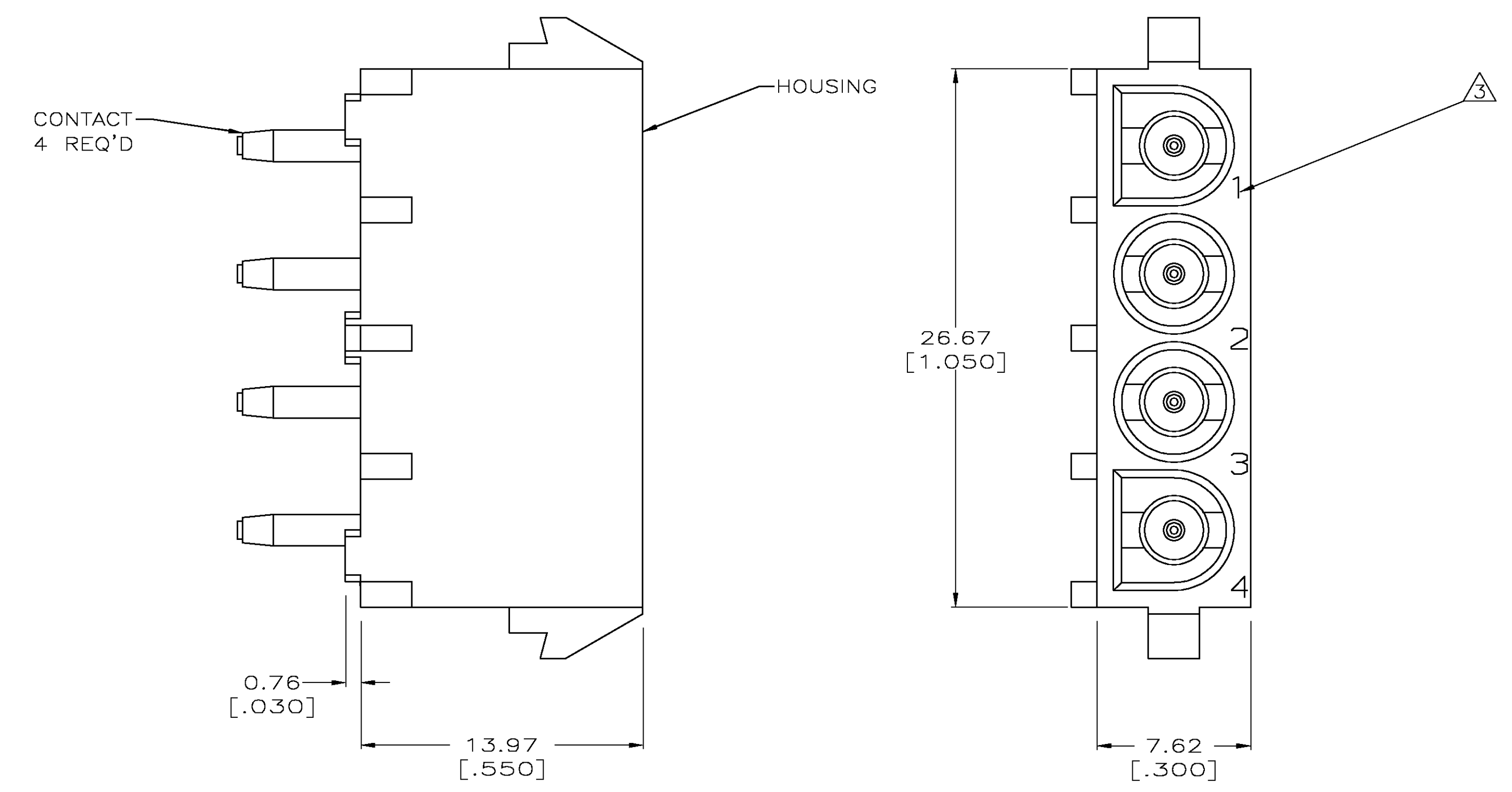
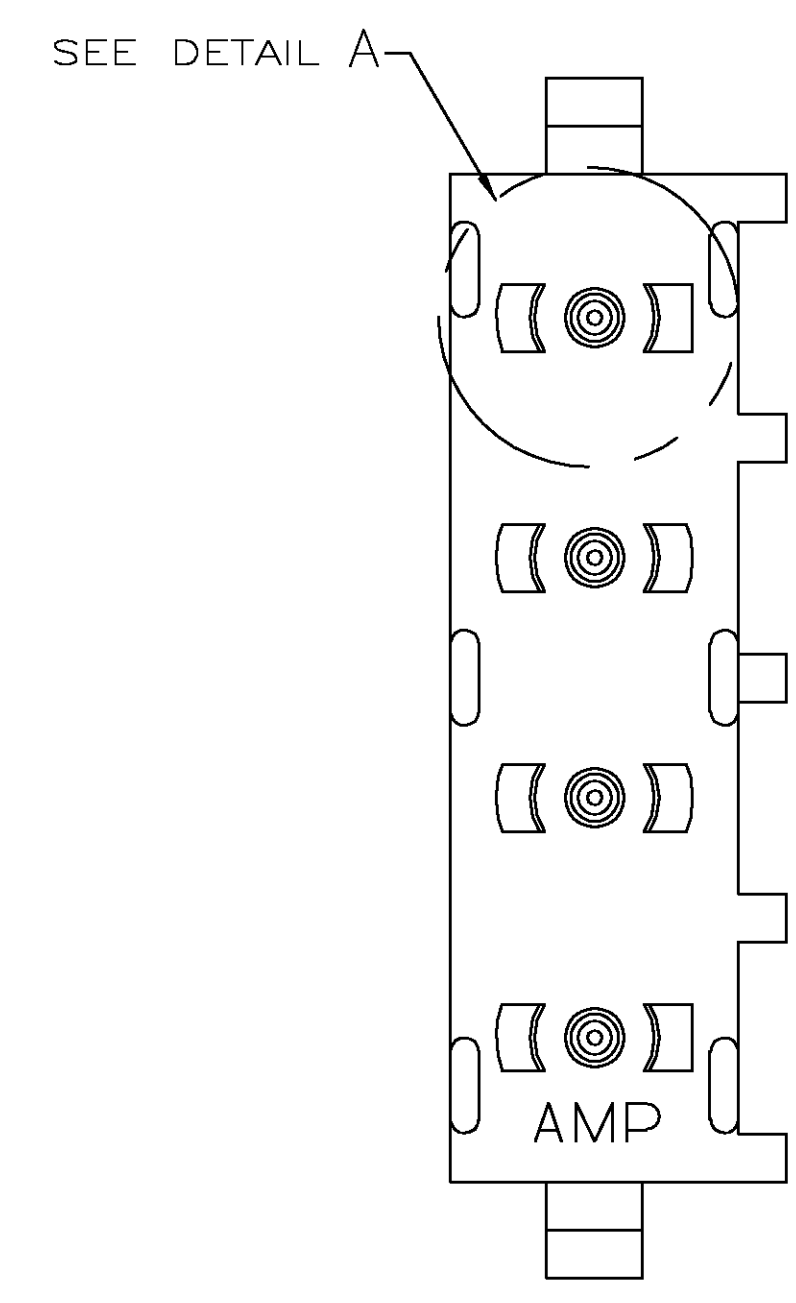
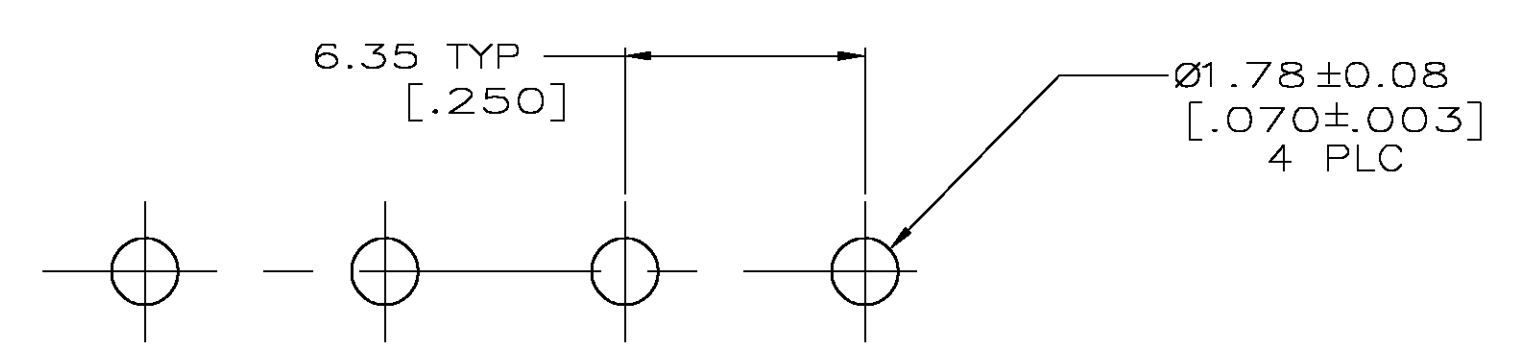
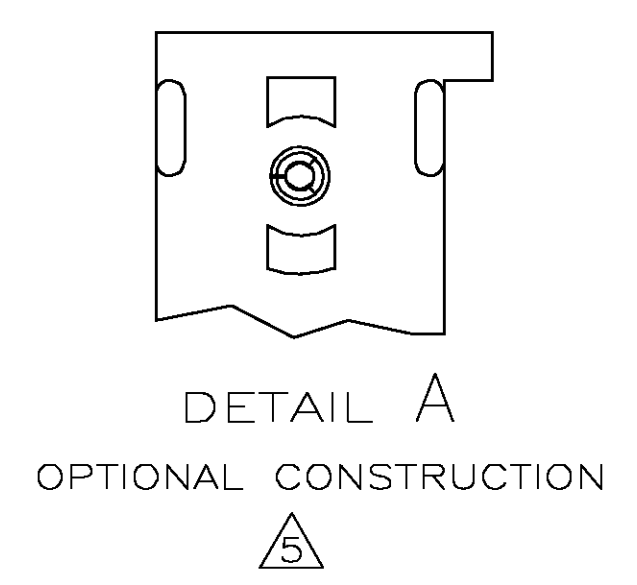
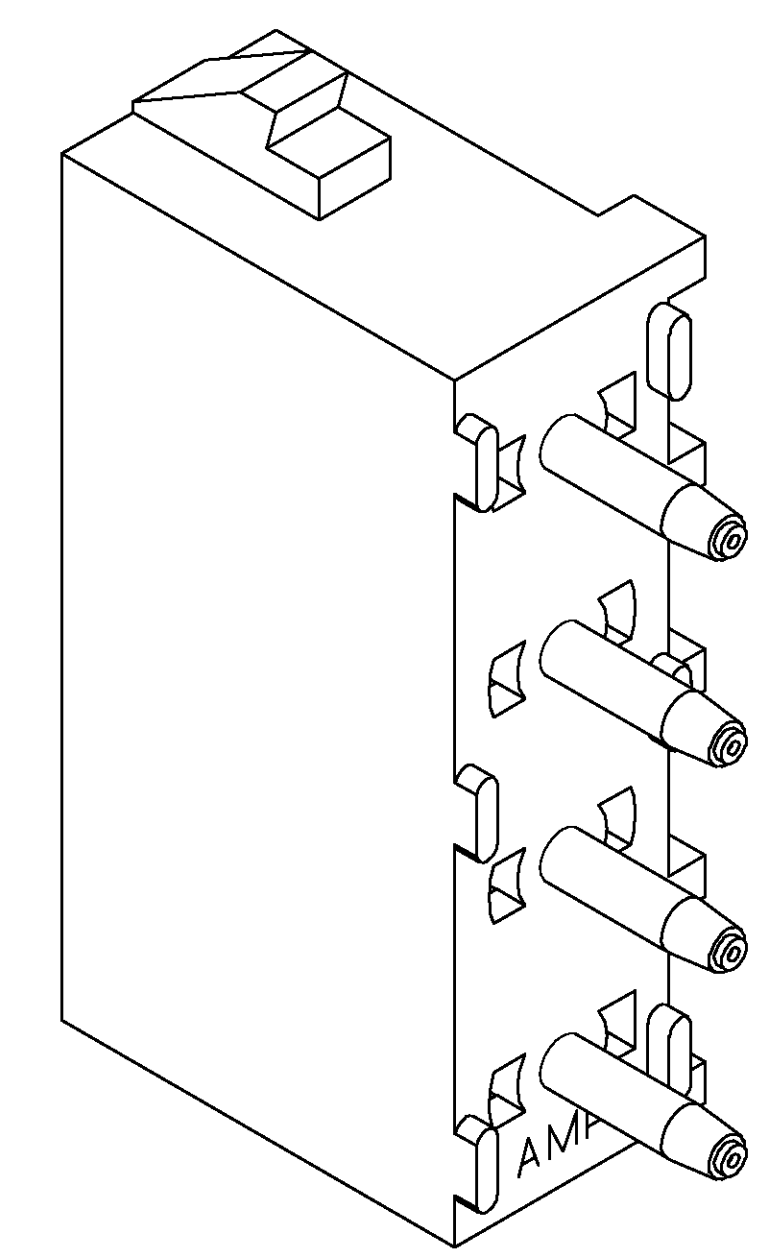
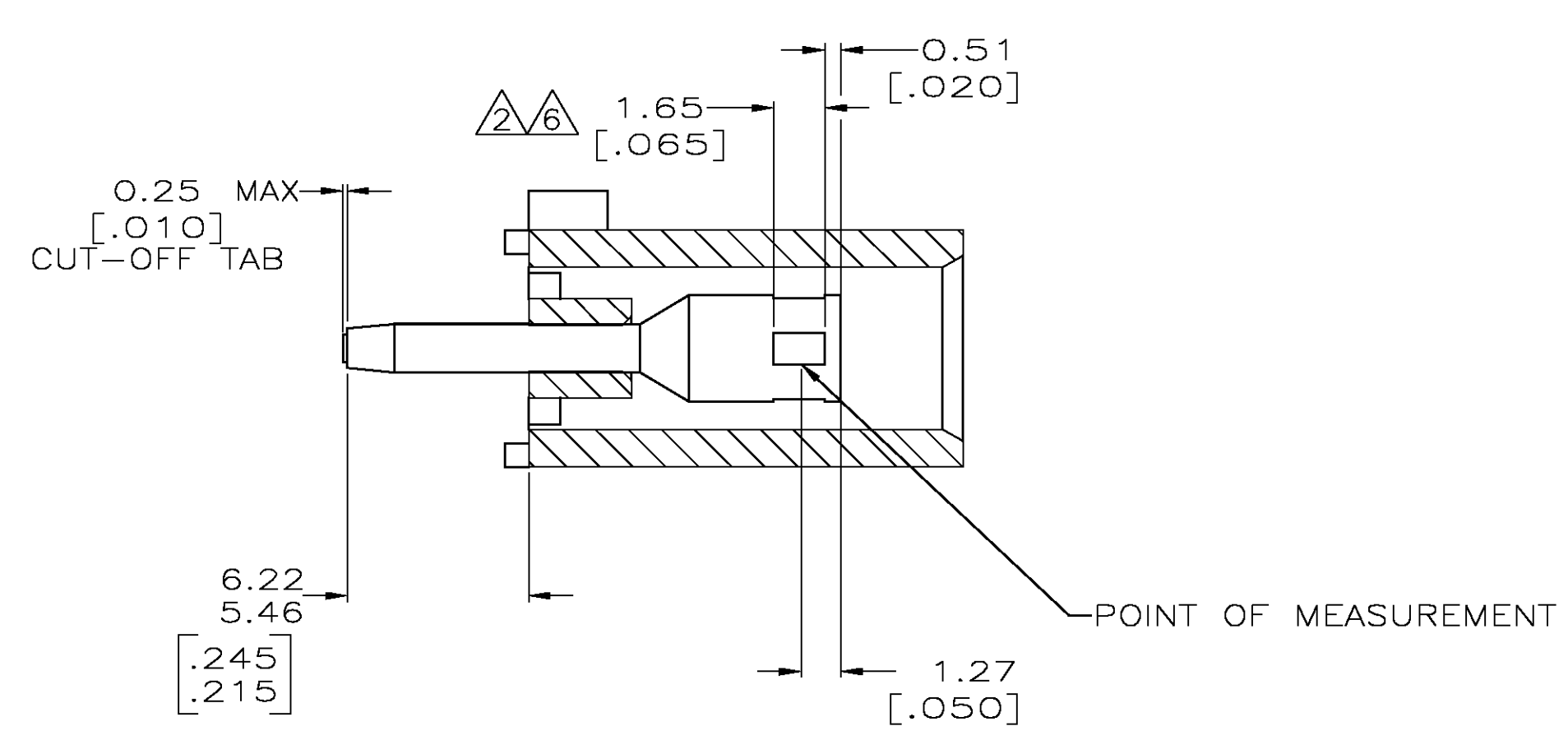


LOC		DIST		REVISIONS			
P	LR	DESCRIPTION	DATE	DN	APVD		
N		REVISED PER EC 0G3B-01094-04	18FEB05	KW	SR		

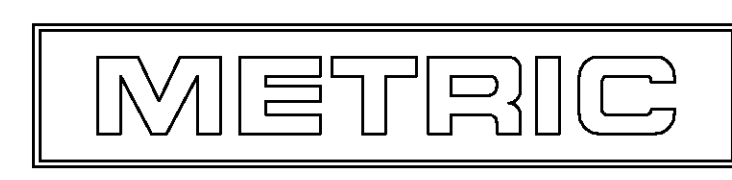


- PARTS COMPLY TO AMP SOLDERABILITY SPECIFICATION 109-11-3.
- CONTACT IS PLATED OVERALL WITH 0.00127 [.000050] NICKEL, THEN 0.00076 [.000030] GOLD OVER CONTACT LENGTH INDICATED AND MATTE TIN LEAD ON SOLDER TAIL END.
- CIRCUIT IDENTIFICATION CHARACTERS ARE ADJACENT TO THE INDICATED CAVITIES, BUT LOCATION AND ORIENTATION MAY DIFFER FROM PRINT.
- DIMENSIONS IN BRACKETS ARE IN INCHES.
- DRAIN HOLES LOCATED AS SHOWN. OPTIONAL CONSTRUCTION - ALL DRAIN HOLES LOCATED 90° AS SHOWN IN DETAIL A.
- CONTACT IS PLATED OVERALL WITH 0.00127 [.000050] NICKEL, THEN 0.00076 [.000030] GOLD OVER CONTACT LENGTH INDICATED AND MATTE TIN ON SOLDER TAIL END.



RECOMMENDED MOUNTING HOLE PATTERN FOR 3.18 [.125] THICK P.C. BOARD

PHOSPHOR BRONZE, GOLD	NYLON, UL94V-0, WHITE	350833-4
PHOSPHOR BRONZE, GOLD	NYLON, UL94V-0, WHITE	350833-2
PHOSPHOR BRONZE, PRE-TIN	NYLON, UL94V-0, WHITE	350833-1
CONTACT MATERIAL AND FINISH	HOUSING MATERIAL	PART NUMBER



THIS DRAWING IS A CONTROLLED DOCUMENT.		DN D. LEWIS	10-02-98	Tyco Electronics Corporation Greensboro, NC 27409
DIMENSIONS: mm [INCHES]		CHK R. SWING	10-02-98	
TOLERANCES UNLESS OTHERWISE SPECIFIED:		APVD M. TRULL	10-02-98	NAME SOCKET HEADER ASSEMBLY, 4 CIRCUIT UNIVERSAL MATE-N-LOK™
0 PLC ± -		APPLICATION SPEC		
1 PLC ± -		SIZE		CAGE CODE DRAWING NO RESTRICTED TO
2 PLC ± 0.13 [.005]		A1 00779		
3 PLC ± -		WEIGHT		SCALE 5:1 SHEET 1 OF 1 REV N
4 PLC ± -		CUSTOMER DRAWING		
ANGLES ± ± 0±30°				
FINISH				